

J CLASS

FIGURE
1

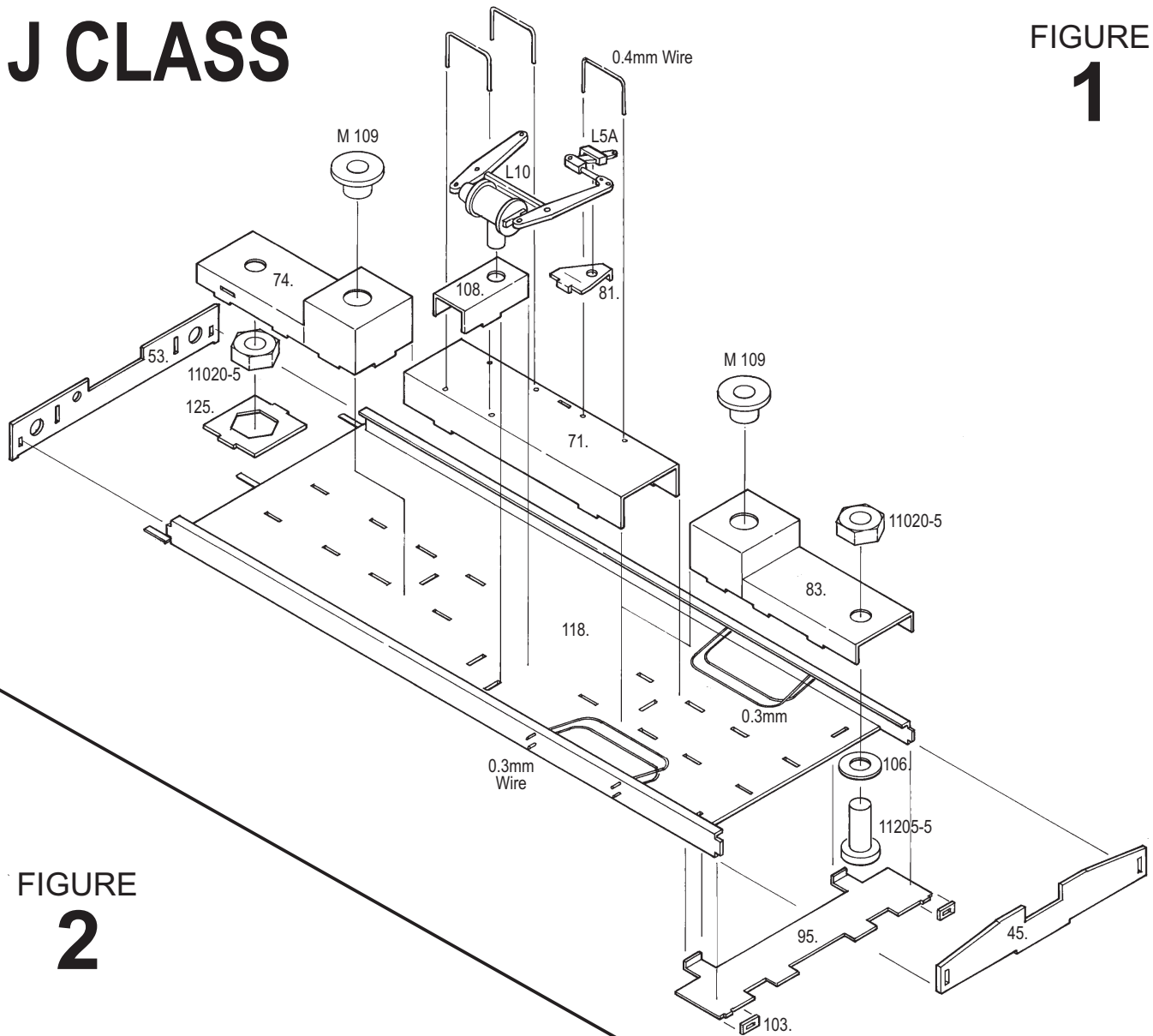


FIGURE
2

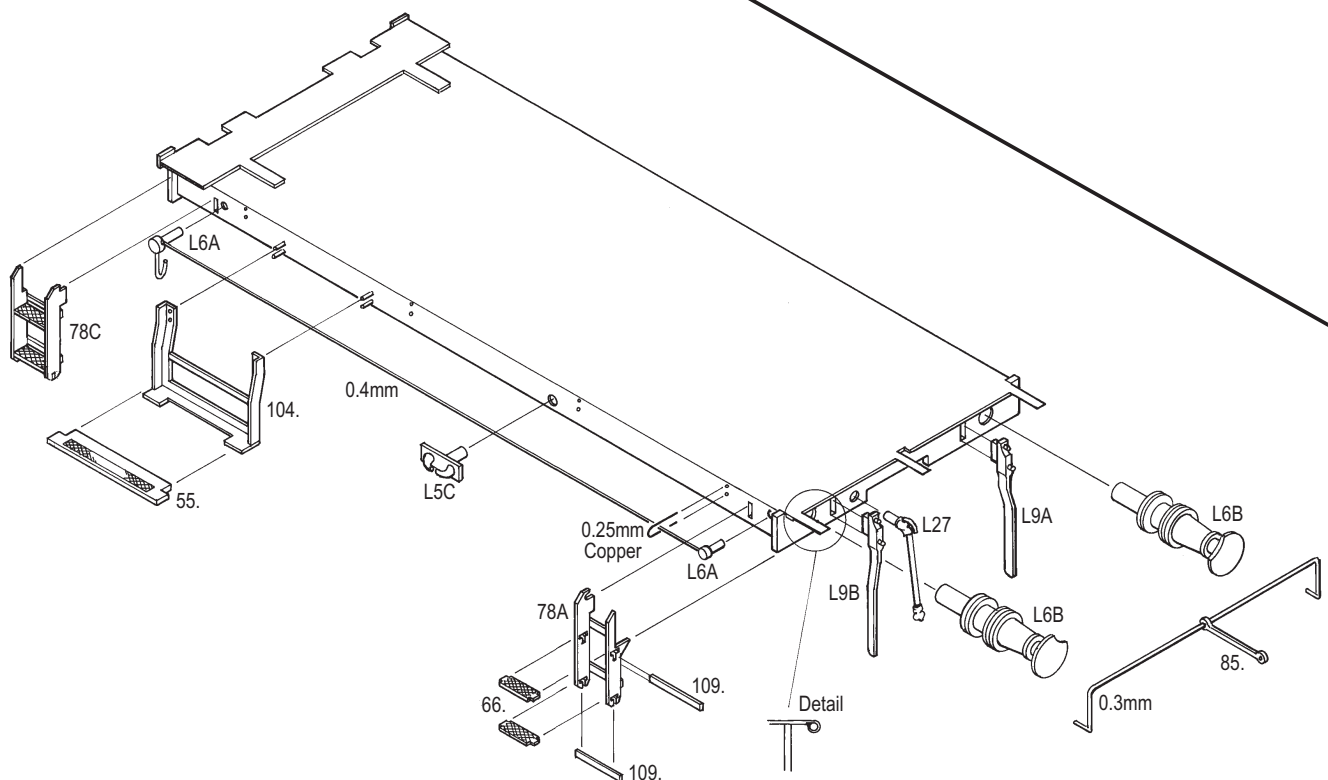


FIGURE
3
COAL
BURNER

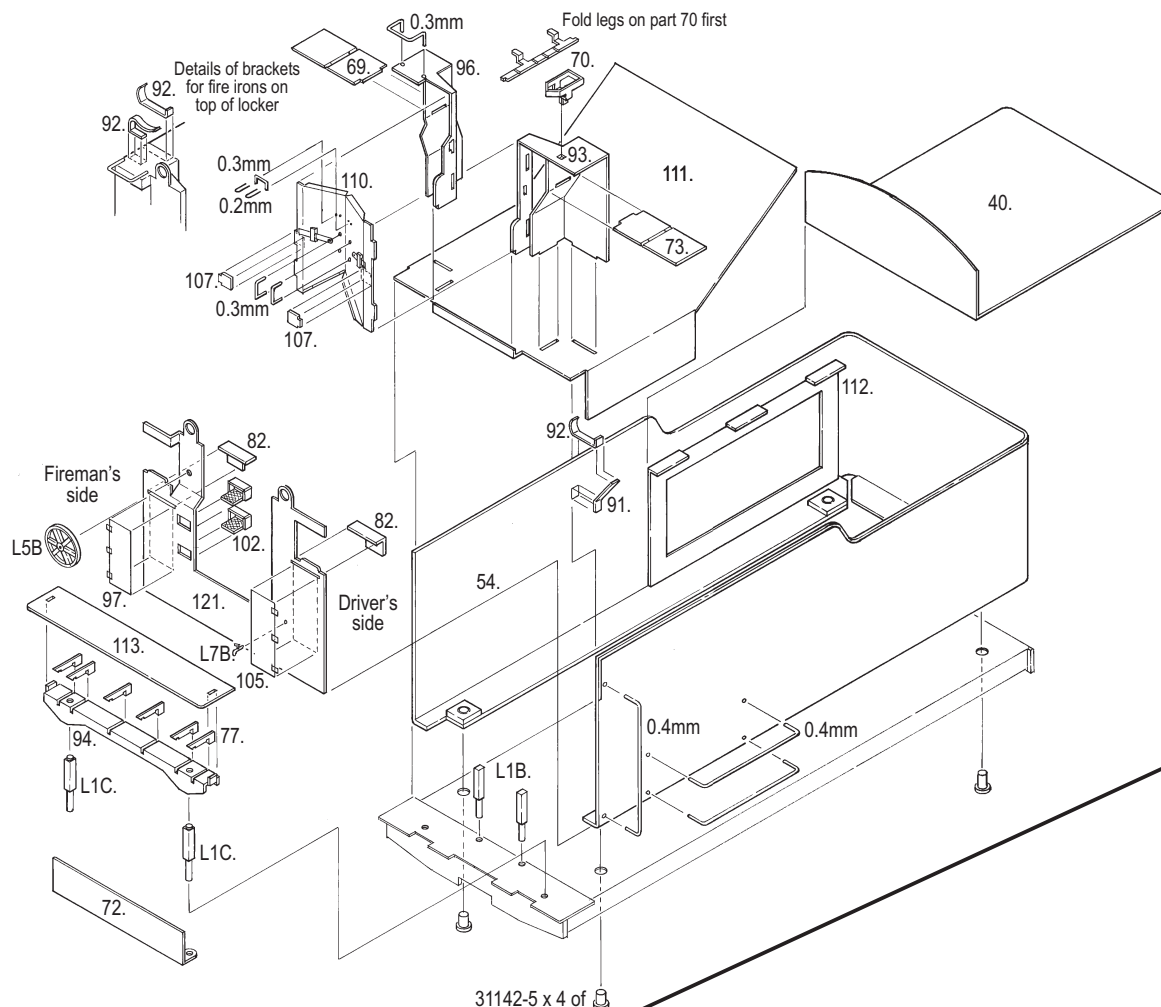
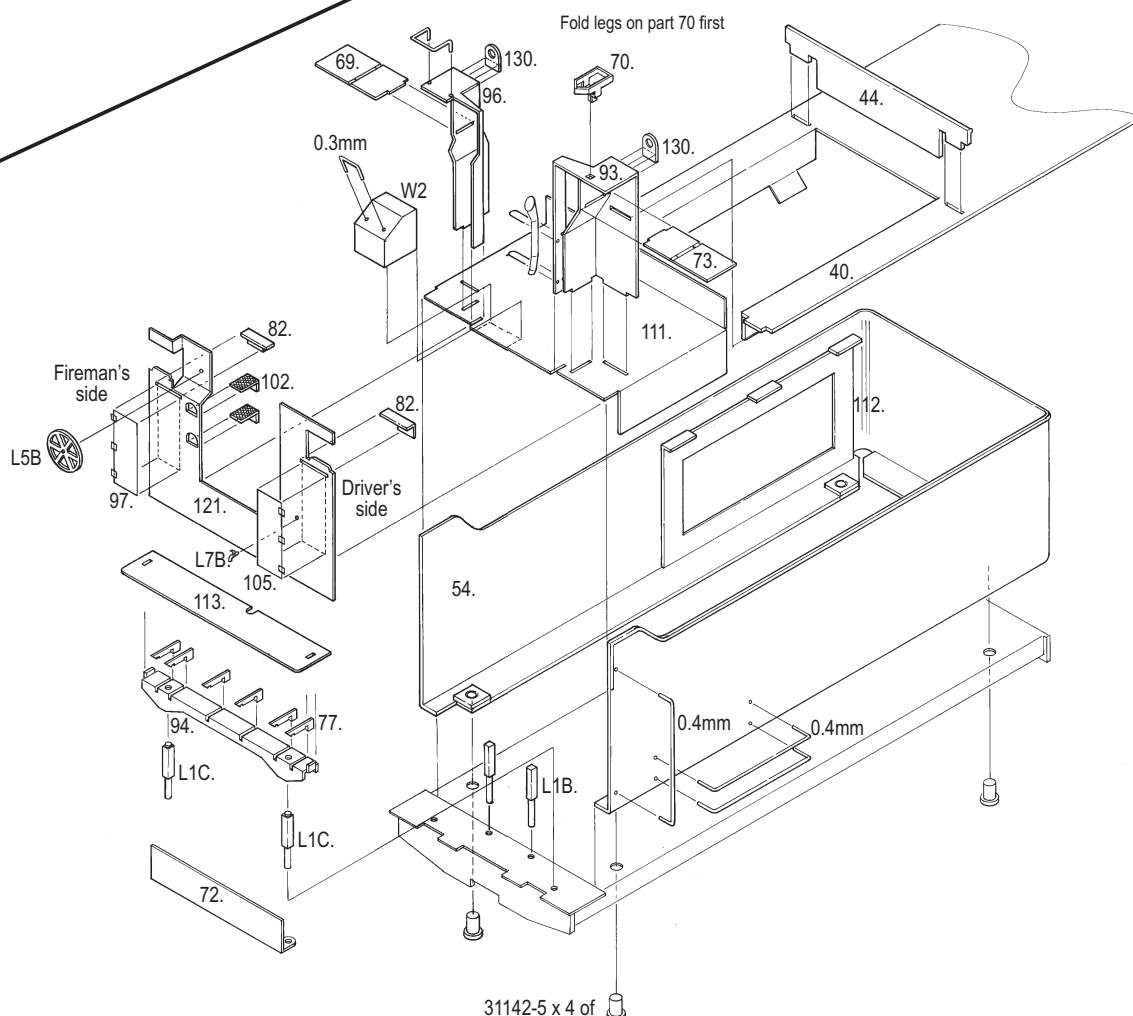


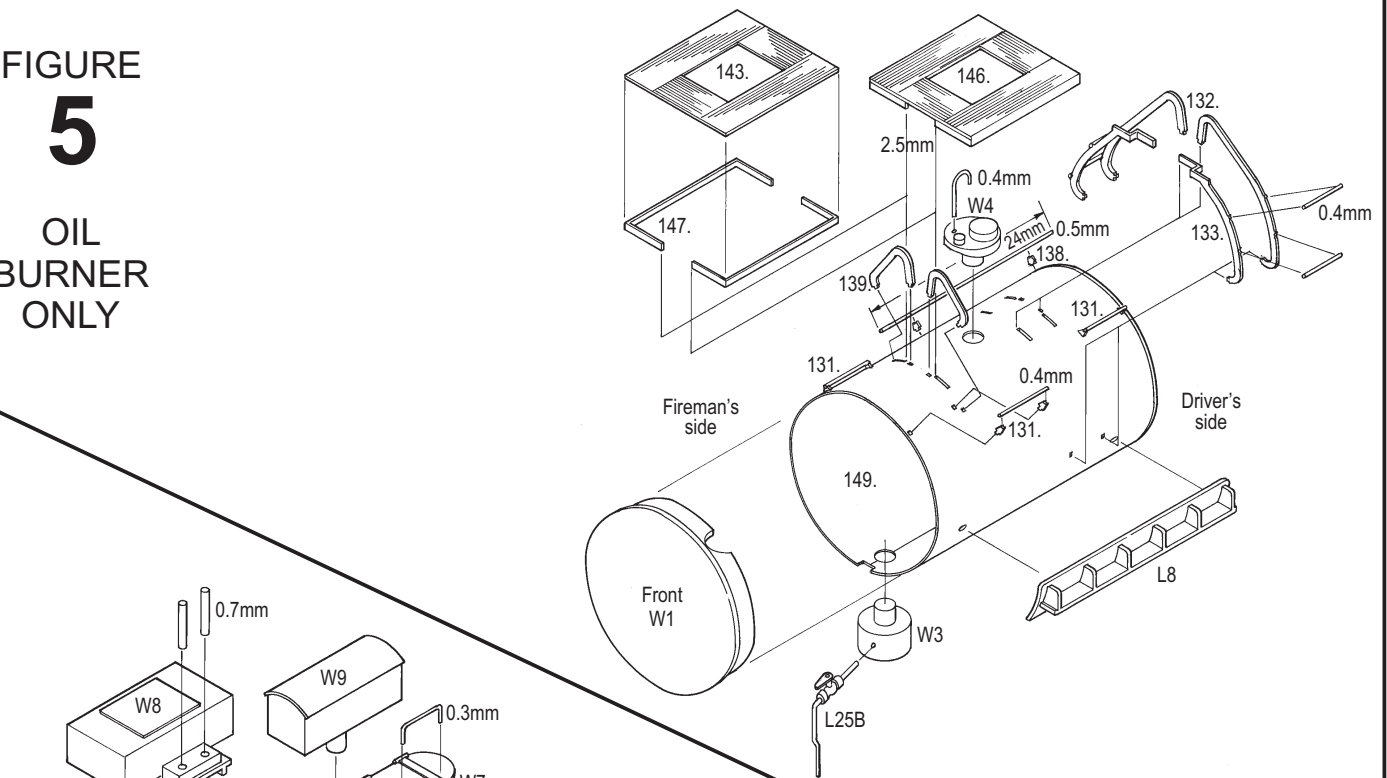
FIGURE
4
OIL
BURNER



FIGURE

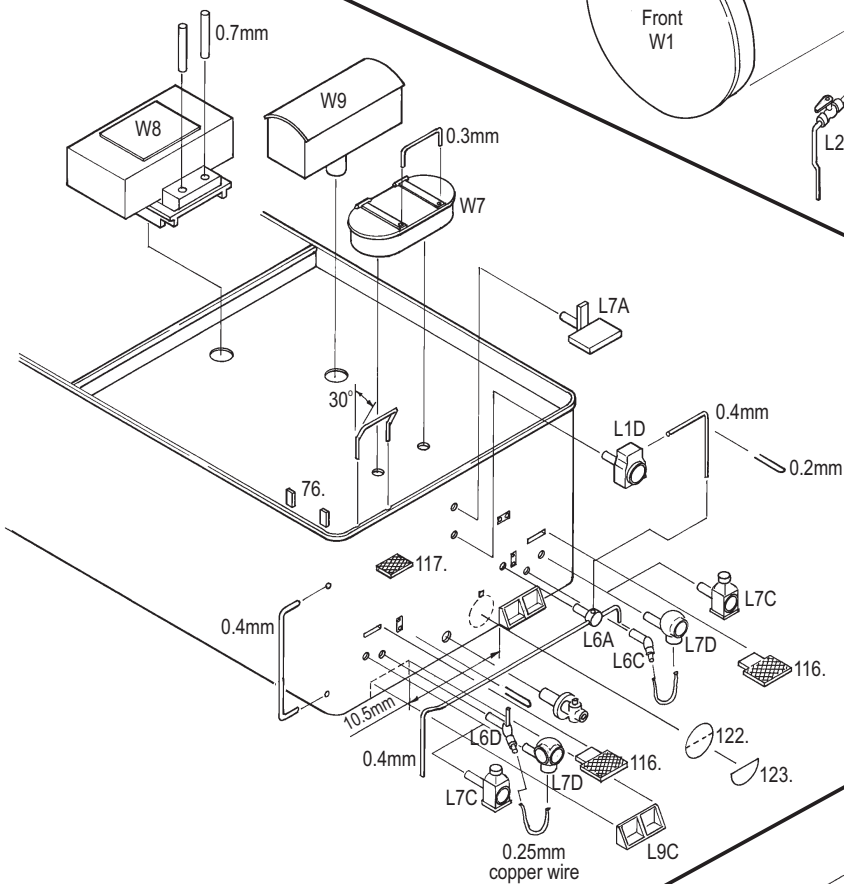
5

OIL
BURNER
ONLY



FIGURE

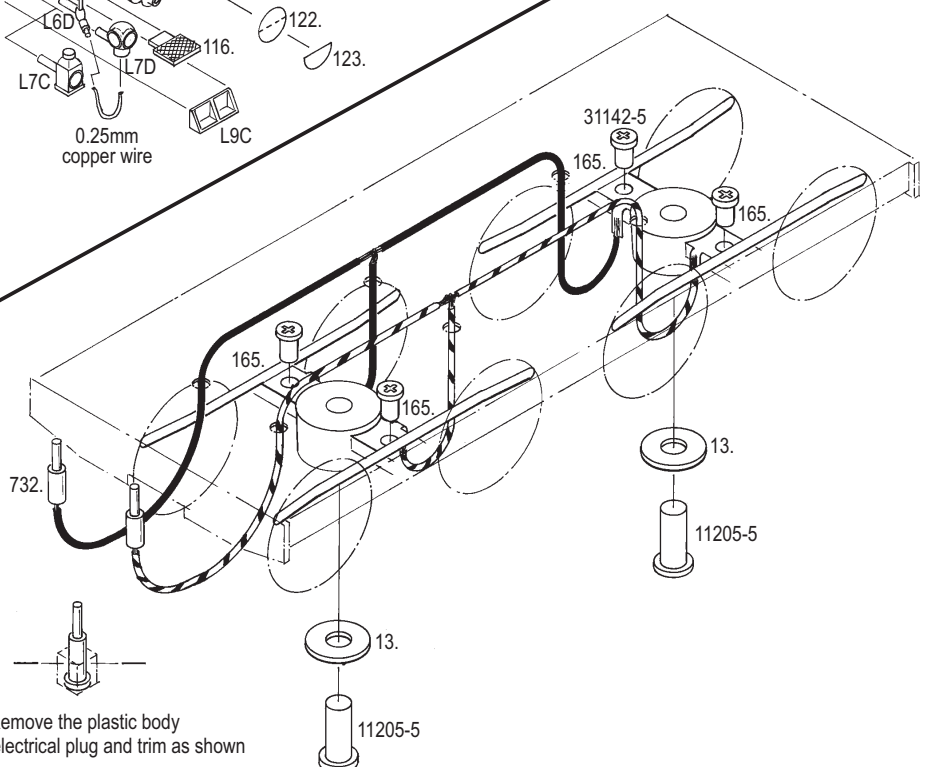
6



FIGURE

7

Remove the plastic body
from the electrical plug and trim as shown



[illegible]

31142-5

68

6

11

0.5mm

1.5mm

M2x2.0

Bend brackets from 0.25mm fret waste and solder to both sides of gearbox to stop hornblocks from rotating

9

19.

166 - 8 off

0.5mm

0.5mm

Bend pickups out to rub on the back of driving wheels **ONLY** after all motion gear is assembled and operating smoothly

FIGURE
11

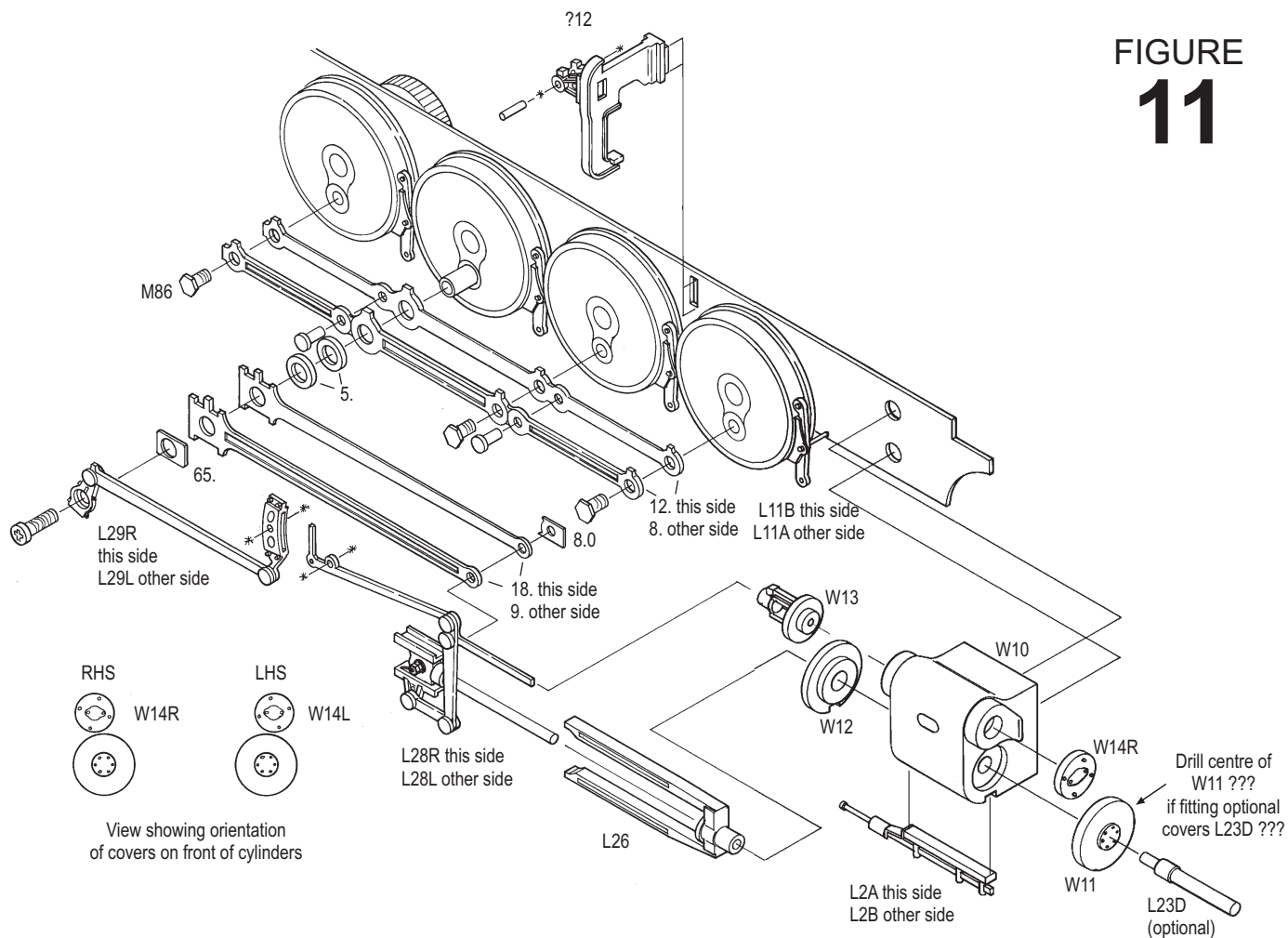


FIGURE
12

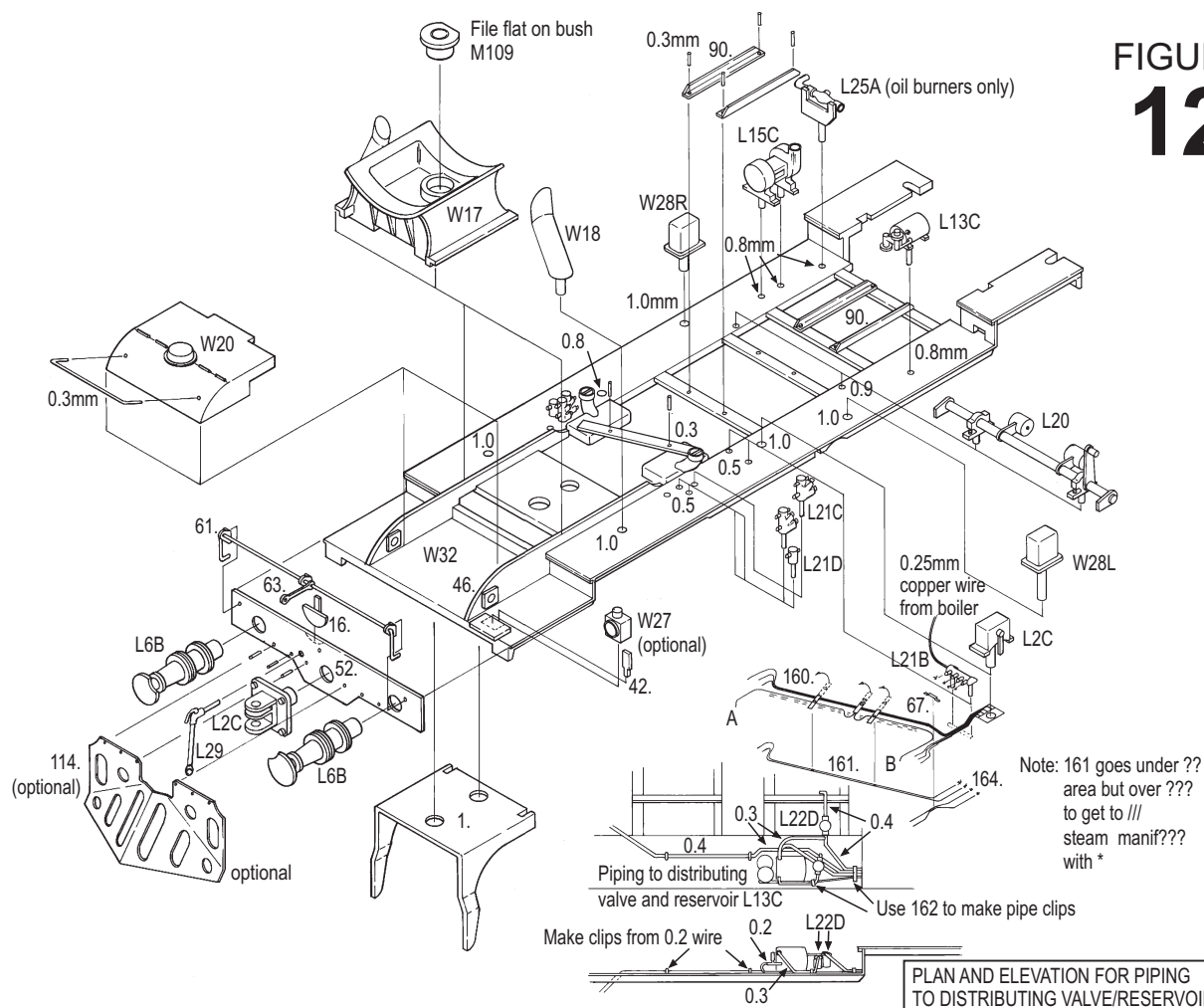
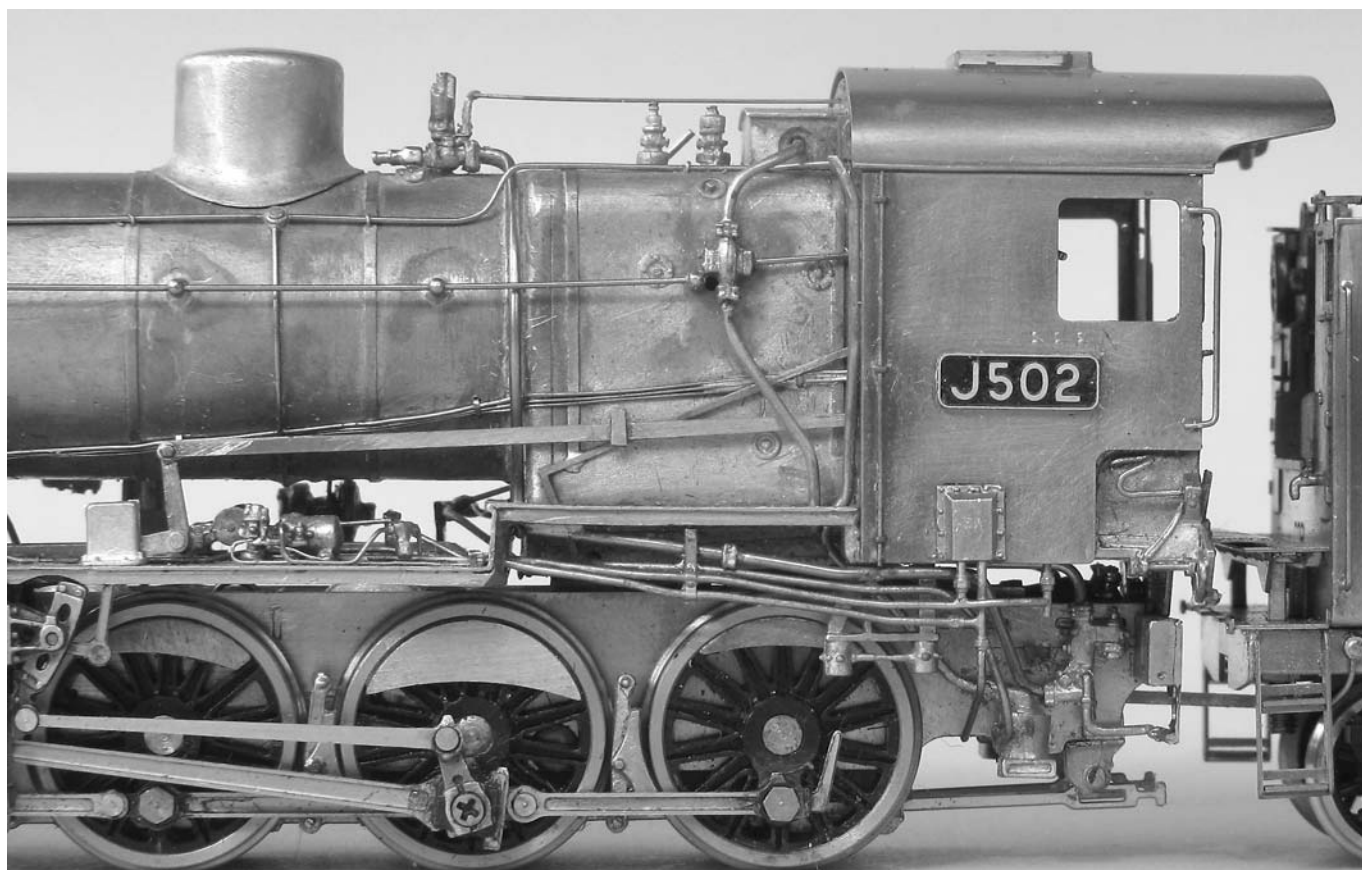
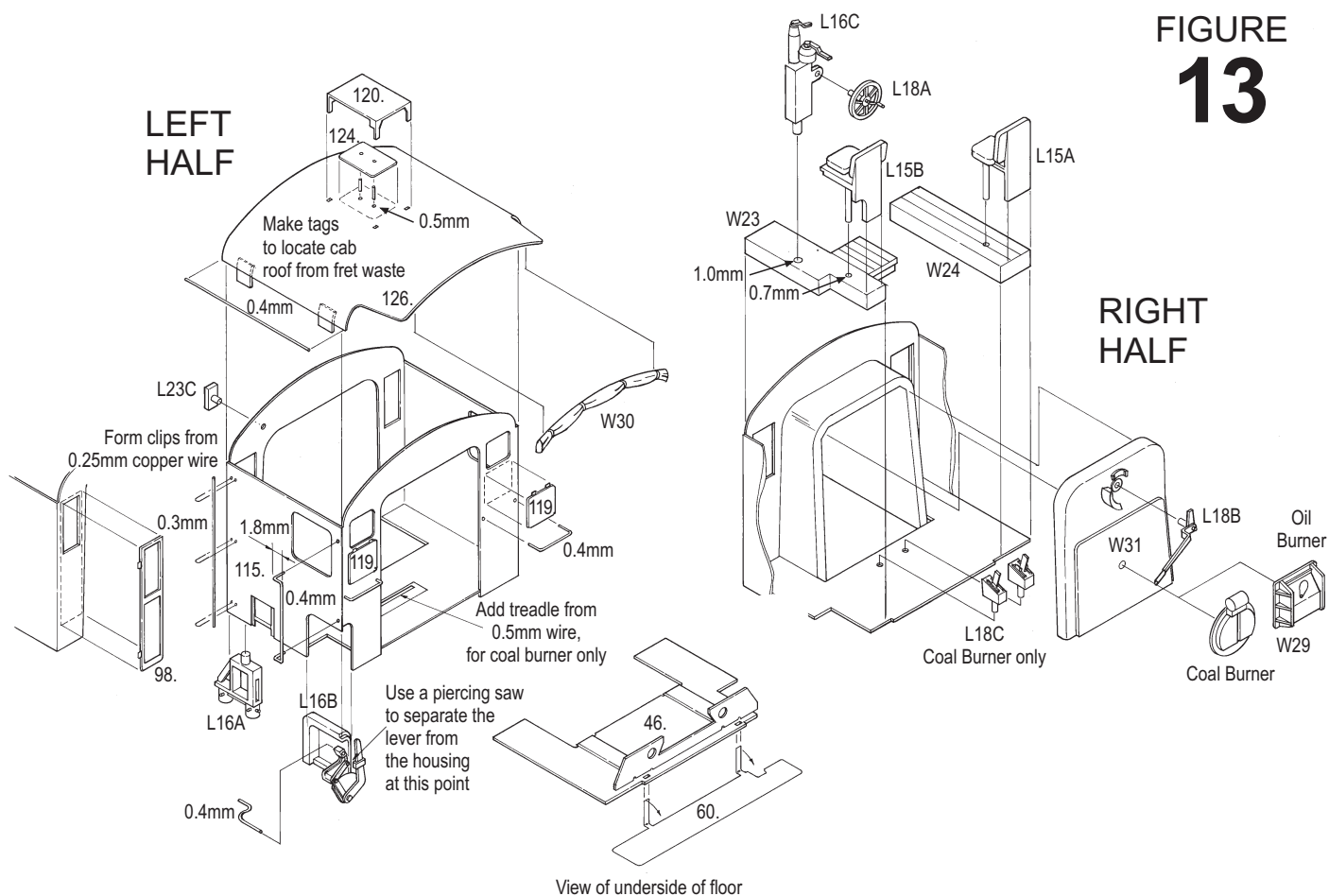
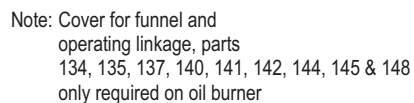


FIGURE
13



14



15

